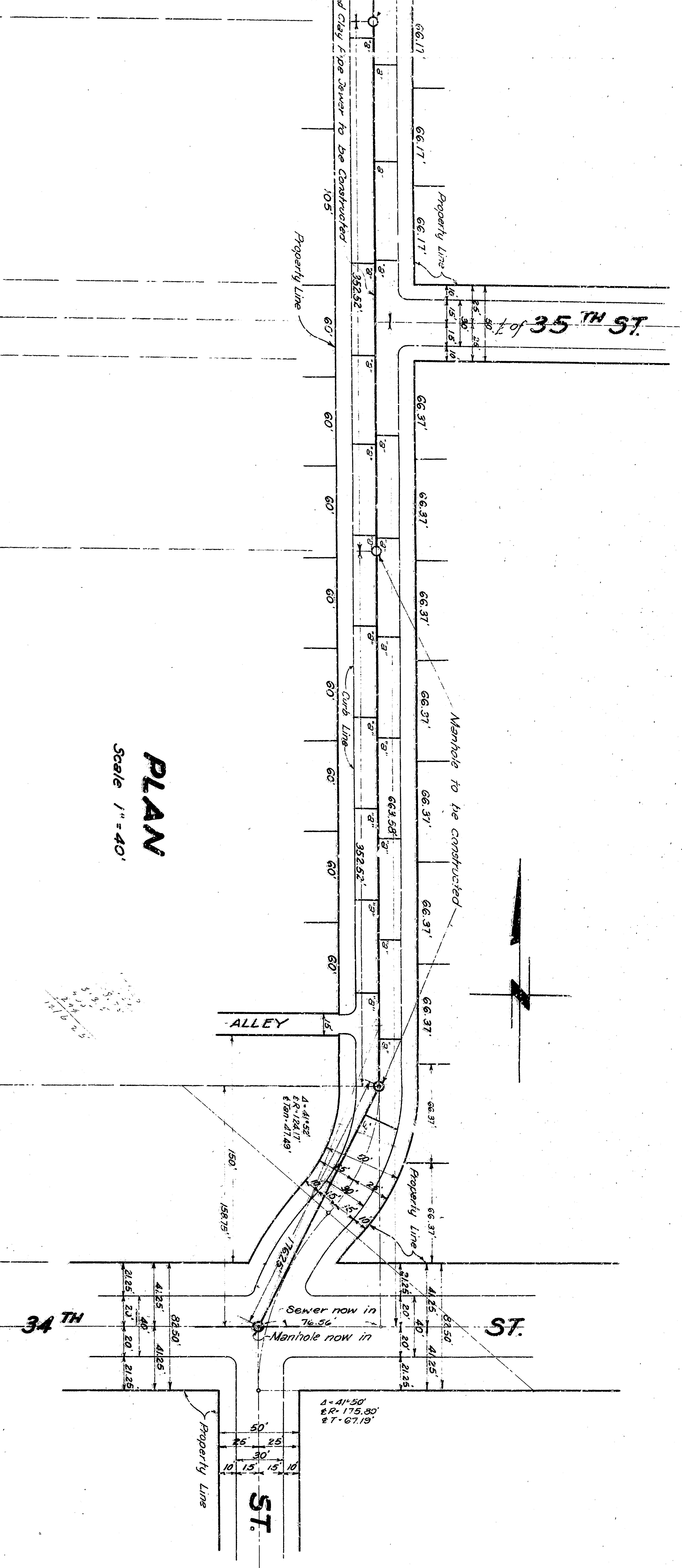


SHEET NO. 1
 PLAN 181714
 FOR SEWER IN
 "F" STREET
 FROM 34th STREET TO 36th STREET
 CITY OF SAN BERNARDINO
 CALIFORNIA

AUGUST 1947

R. D. FORSYTHE
 Acting City Engineer

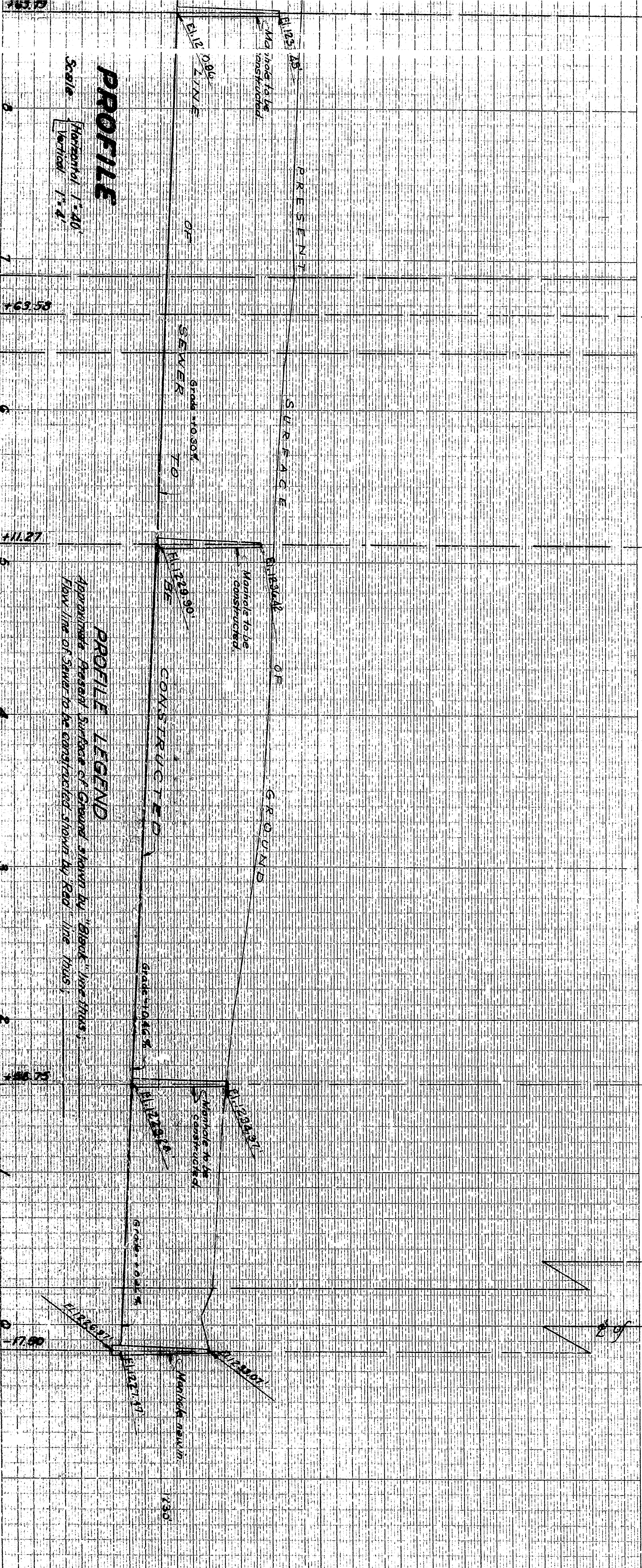
PLAN ADOPTED April 5, 1948



PLAN
 Scale 1" = 40'

APR 5 1948
 R. D. FORSYTHE
 Acting City Engineer

- LEGEND**
- * or in means inch or inches
 - or Ft means foot or feet
 - N.E. means North East
 - # means Center Line
 - 8" 4" Wyes with 4" connecting sewers to be constructed shown thus: ---
 - 8" 4" Wyes with 4" connecting sewers to be constructed "own thus: ---
 - Manholes to be constructed shown thus: ---
 - Manhole now in, shown thus: ---
 - 8" 4" Wyes with 4" connecting sewers to be constructed shown thus: ---
 - 8" 4" Wyes with 4" connecting sewers to be constructed shown thus: ---
- SEWER DETAIL**
- Lineal Ft. of 8" 4" Wyes with 4" connecting sewers to be constructed: 1233.48'
 - Lineal Ft. of 4" Wyes with 4" connecting sewers to be constructed: 443.00'
 - No. of 8" 4" Wyes with 4" connecting sewers to be constructed: 29
 - No. of Manholes to be constructed: 4



PROFILE
 Horizontal 1" = 20'
 Vertical 1" = 4'

PROFILE LEGEND
 Horizontal Surface of Ground shown by Black line thus: ---
 Proposed Sewer to be constructed shown by Red line thus: ---

TITLE TO STREETS

As established by Map of Road No. 1233, Recorded in Bk. 26, Pgs. 7, 8, 9, 10, 11 & 12 Records of San Bernardino County, California

GRADE ORDINANCE

Grade of "F" Street established by Resolution No. 1457 of the City of San Bernardino, California

NOTICE

All conditions shown in Part of approved and approved sewer plan which is 100% to show when the sewer is shown as established by Ordinance 1457 of the City of San Bernardino, California